

**DEPARTMENT OF THE ARMY TECHNICAL MANUAL**

**ORGANIZATIONAL, DIRECT SUPPORT, AND GENERAL  
SUPPORT MAINTENANCE REPAIR PARTS AND SPECIAL  
TOOLS LISTS (INCLUDING DEPOT MAINTENANCE  
REPAIR PARTS AND SPECIAL TOOLS)  
FIXED AUTOTRANSFORMER POWER TRANSFORMERS  
TF-179A/U, TF-179B/U, AND TF-179C/U  
FSN 5950-133-8861**

*Headquarters, Department of the Army, Washington, D.C.  
30 July 1973*

Current as of December 1972

|   | Paragraph | Page |
|---|-----------|------|
| Section I INTRODUCTION  |           |      |
| Scope   | 1-1       | 2    |
| General   | 1-2       | 2    |
| Explanation of columns  | 1-3       | 2    |
| Special information   | 1-4       | 4    |
| Location of repair parts  | 1-5       | 4    |
| Abbreviations (Not applicable)  | 1-6       | 4    |
| Reporting of equipment publication improvements   | 1-7       | 4    |
| II. PRESCRIBED LOAD ALLOWANCE (Not applicable)  |           |      |
| III. REPAIR PARTS LIST  |           | 6    |
| IV. SPECIAL TOOLS, TEST AND SUPPORT EQUIPMENT (Not applicable)                                    |           |      |
| V. REPAIR PARTS LIST  |           | 8    |
| VI. SPECIAL TOOLS, TEST AND SUPPORT EQUIPMENT (Not applicable)                                    |           |      |
| VII. INDEX-FEDERAL STOCK NUMBER AND REFERENCE NUMBER CROSS-REFERENCE<br>TO FIGURE AND ITEM NUMBER |           | 11   |

\*This manual supersedes SIG 7 & 8, TF-179/U, 3 May 1956.

## SECTION I INTRODUCTION

### 1-1. Scope

This manual lists repair parts and special tools required for the performance of organizational, direct support, general support, and depot maintenance of the TF-179A/U, TF-179B/U, and TF-179C/U. The PCCN for the equipment is GRNAAA for all models.

### 1-2. General

This repair parts and special tools list is divided into the following sections:

- a. Prescribed Load Allowance (PLA)-Section II. Not applicable.
- b. Repair Parts List-Section III. A list of repair parts authorized for the performance of maintenance at the organizational level. This repair parts list is arranged in alphabetical order.
- c. Special Tools, Test and Support Equipment-Section IV. Not applicable.
- d. Repair Parts List-Section V. A list of repair parts authorized for the performance of maintenance at the direct support, general support, and depot level.
- e. Special Tools, Test and Support Equipment - Section VI. Not applicable.
- f. Index-Federal Stock Number and Reference Number Cross-Reference to Figure *and Item Number*-Section VII. A list, in ascending numerical sequence, of all Federal stock numbers appearing in the listings, followed by a list, in alphameric sequence, of all reference numbers appearing in the listings. Federal stock number and reference numbers are cross-referenced to each illustration figure and item number or reference designation appearance.

### 1-3. Explanation of Columns

The following provides an explanation of columns found in the tabular list.

#### a. Source, Maintenance, and Recoverability Codes (SMR).

(1) *Source code.* Indicates the manner of acquiring support items for maintenance, repair, or overhaul of end items. Source codes are—

| <i>Code</i> | <i>Explanation</i>   |
|-------------|--|
| PA          | Item procured and stocked for anticipated or known usage.  |
| PB          | Item procured and stocked for insurance purposes because essentiality dictates that a minimum quantity be available in the supply systems. |
| PC          | Item procured and stocked and which otherwise would be coded PA except that it is deteriorative in nature.                                 |

| <i>Code</i> | <i>Explanation</i>  |
|-------------|---|
| PD          | Support item, excluding support equipment procured for initial issue or outfitting and stocked only for subsequent or additional initial issues or outfittings. Not subject to automatic replenishment.   |
| PE          | Support equipment procured and stocked for initial issue or outfitting to specified maintenance repair activities.  |
| PF          | Support equipment which will not be stocked but which will be centrally procured on demand.   |
| PG          | Item procured and stocked to provide for sustained support for the life of the equipment. It is applied to an item peculiar to the equipment which because of probable discontinuance or shutdown or production facilities would prove uneconomical to reproduce at a later time. |
| KD          | An item of depot overhaul/repair kit and not purchased separately. Depot kit defined as a kit that provides items required at the time of overhaul or repair.   |
| KF          | An item of a maintenance kit and not purchased separately. Maintenance kit defined as a kit that provides an item that can be replaced at organizational or direct support or general support levels of maintenance.  |
| KB          | Item included in both a depot overhaul/repair kit and a maintenance kit.  |
| MO          | Item to be manufactured or fabricated at organizational level.  |
| MF          | Item to be manufactured or fabricated at direct support maintenance level.  |
| MH          | Item to be manufactured or fabricated at general support maintenance level.   |
| MD          | Item to be manufactured or fabricated at depot maintenance level.   |
| AO          | Item to be assembled at organizational level.   |
| AF          | Item to be assembled at direct support maintenance level.   |
| AH          | Item to be assembled at general support maintenance level.  |
| AD          | Item to be assembled at depot maintenance level.  |
| XA          | Item is not procured or stocked because the requirements for the item will result in the replacement of the next higher assembly.   |
| XB          | Item is not procured or stocked. If not available through salvage, requisition  |
| XC          | Installation drawing, diagram instruction   |

**Code**                      **Explanation**  
**sheet**, field service drawing, that is identified by manufacturers\* part number.  
**XD** - Support items can be requisitioned with justification

**NOTE**

Cannibalization or salvage may be used as a source of supply for any items source coded above except those coded XA and aircraft support items as restricted by AR 700-42.

(2) Maintenance code. Maintenance codes are assigned to indicate the levels of maintenance authorized to USE and REPAIR support items. The maintenance codes are entered in the third and fourth positions of the Uniform SMR Code Format as follows-

(a) Use (third position) The maintenance code entered in the third position indicates the lowest maintenance level authorized to remove, replace, and use the support item. The maintenance code entered in the third position indicates one of the following levels of maintenance.

**Code**                      **Application/Explanation**  
**O** - Support item is removed, replaced, used at the organizational level of maintenance.

**NOTE**

A code "C" may be used in this position to denote crew or operator maintenance performed within organizational maintenance

**F** - Support item is removed, replaced, used at the direct support maintenance level  
**H** - Support item is removed, replaced, used at the general support maintenance  
**D** - Support items that are removed, replaced, used at depot only.

**(b) Repair (fourth position).** The maintenance code entered in the fourth position indicates whether the item is to be repaired and identifies the lowest maintenance level with the capability to perform complete repair (i.e., all authorized maintenance functions). When a maintenance code is not used a dash (-) sign is entered. For multi-service equipment/systems or when a code is entered, this position will contain one of the following maintenance codes as assigned by the service(s) that require the code—

**Code**                      **Application/Explanation**  
**O** — The lowest maintenance level capable of complete repair of the support item is the organizational level.

**Code**                      **Application/Explanation**  
**F** - The lowest maintenance level capable of complete repair of the support item is direct support.  
**H** - The lowest maintenance level capable of complete repair of the support item is general support  
**D** - The lowest maintenance level capable of complete repair of the support item is the depot level.  
**L** - Repair restricted to designated Specialized Repair Activity  
**Z** - Non-repairable. No repair is authorized  
**B** - No repair is authorized The item may be reconditioned by adjusting, lubricating, etc, at the user level No parts or special tools are procured for the maintenance of this item

(3) Recoverability code. Recoverability codes are assigned to support items to indicate the disposition action on unserviceable items. The recoverability code is entered in the fifth position of the uniform SMR Code Format as follows-

**Code**                      **Explanation**  
**Z** - Nonrepairable item. When unserviceable, condemn and dispose at the level indicated in the first digit of the maintenance code  
**O** - Repairable item. When uneconomically repairable, condemn and dispose at organizational level.  
**F** — **Repairable item When uneconomically repairable, condemn and dispose at the direct support level.**  
**H** — **Repairable item. When uneconomically repairable, condemn and dispose at the general support level.**  
**D** — **Repairable item. When beyond lower level repair capability, return to depot (condemnation and disposal not authorized below depot level.**  
**L** — **Repairable item Repair, condemnation, and disposal not authorized below depot Specialized Repair Activity level.**  
**A** — **Item requires special handling or condemnation procedures because of specific reasons (i.e. precious metal content, high dollar value, critical material or hazardous material).**

**b. Federal Stock Number** Indicates the Federal stock number assigned to the item and will be used for requisitioning purposes.

**c. Description.** Indicates the Federal item name and

a minimum description required to identify the item. The last line indicates the reference number followed by the applicable Federal Supply Code for Manufacturer (FSCM) in parentheses. The FSCM is used as an element in item identification to designate manufacturer or distributor or Government agency etc, and is identified in SB 708-42.

d. Unit of Measure (U/M). Indicates the standard or basic quantity by which the listed item is used in performing the actual maintenance function. This measure is expressed by a two-character alphabetical abbreviation: e.g., ea, in, pr, etc., and is the basis used to indicate quantities and allowances in subsequent columns. When the unit of measure differs from the unit of issue, the lowest unit of issue that will satisfy the required units of measure will be requisitioned.

e. Quantity Incorporated in Unit. This column indicates the quantity of the item used in the equipment. Subsequent appearances of the same item in the same assembly are indicated by the letters "REF".

f. 15-Day Organizational Maintenance Allowances.

(1) The repair parts indicated by an asterisk in the allowance column represent those authorized for use at the organizational category, and will be requisitioned on an "as required" basis, until stockage is based on demand in accordance with AR 710-2.

(2) Major Army commanders are authorized to approve reduction in the range of support items authorized for use in units within their commands. Recommendations for increase in range of items authorized for use will be forwarded to Commander, US Army Electronics Command, ATTN: AMSSEL-MA-SNV, Fort Monmouth, N.J., 07703.

(3) Allowance quantities are indicated in the special tools list section for special tools, TMDE, and other support equipment.

g. 30-Day DS/GS Maintenance Allowances.

#### NOTE

Allowances in GS column are for GS maintenance only.

(1) The repair parts indicated by asterisk entries in separate allowance columns for DS and GS represent those authorized for use at that category of maintenance to be requisitioned on an "as required" basis, until stockage is based on demand in accordance with AR 710-2.

(2) Allowance quantities are indicated in the special tool lists section for special tools, TMDE, and other support equipment.

h. 1-Year Allowances For 100 Equipments (on Agency Planning Purposes). Column intentionally left blank.

i. Depot Maintenance Allowance For 100 Equipments. This column indicates quantity the fixed ap-

pearance of each item the total quantity authorized for depot maintenance of 100 equipments.

j. Illustration.

(1) Figure number Not applicable.

(2) Item number, Indicates the item number or reference designation used to reference the item,

#### 1-4. Special Information

a. Usable on codes are included in column 3. Uncoded items are applicable to all models. Identification of the usable on codes used in this publication are-

|      |           |
|------|-----------|
| Code | Used on   |
| AEB  | TF-179A/U |
| AEC  | TF-179B/U |
| AED  | TF-179C/U |

b. The following publication pertains to the equipment and its components:

**TM 11-2341A Fixed Autotransformer Power Transformer TF-179/U, TF-179B/U, and TF-179C/U.**

#### 1-5. Location of Repair Parts

a. This manual contains one cross-reference index (sec VII) to be used to locate a repair part when either the Federal stock number or reference number (manufacturer's part number) is known. The first column in the index is prepared in numerical or alphanumeric sequence in ascending order. The reference numbers (manufacturer's part numbers) are listed immediately following the last listed Federal stock number in the index of Federal stock numbers.

b. When the Federal stock number or reference number is known, follow the procedures given in (1) and (2) below.

(1) Refer to the index of Federal stock numbers (sec VII), and locate the Federal stock number or reference number. The FSN and reference number are cross-referenced to the applicable figure and item number or reference designation.

(2) Refer to the repair parts list (sec III and V) and locate the figure number (col 7a-20P, 10a-34P) and item number or reference designation (col 7b-20P, 10b-34P) as noted in the FSN index.

c. When the figure and item number or reference designation are known, scrutinize columns 7a and 7b-20P and 10a and 10b-34P, of the repair parts list (sec III and V) until the item is located.

d. When the FSN, reference number, figure number, and item number are not known, scrutinize column 3 of the repair parts list (sec III and V), which is arranged in alphabetical order.

#### 1-6. Abbreviations

Not applicable

**1-7. Reporting of Equipment Publication  
Improvements**

**The reporting** of errors, omissions, and recommendations for improving this publication by the individual

**user is encouraged. Reports should be submitted on** DA Form 2028 (Recommended Changes to Publications) and forwarded direct to Commander, US Army Electronics Command, ATTN: AMSEL-MA-SNV, Fort Monmouth, N.J., 07703.

SECTION III

TM11-5950-210-24P

| (1)<br>SMR<br>CODE | (2)<br>FEDERAL<br>STOCK<br>NUMBER | (3)<br>DESCRIPTION<br>REFERENCE NUMBER & MFR CODE  | (4)<br>UNIT<br>OF<br>MEAS | (5)<br>QTY<br>INC<br>IN<br>UNIT | (6)<br>15-DAY ORGANIZATIONAL<br>MAINTENANCE ALLOW |      |       |        | (7) (f)<br>ILLUSTRATION |            |
|--------------------|-----------------------------------|--|---------------------------|---------------------------------|---|------|-------|--------|-------------------------|------------|
|                    |                                   |  |                           |                                 | (a)   | (b)  | (c)   | (d)    | (a)                     | (b)        |
|                    |                                   |  |                           |                                 | 1 5   | 6-20 | 21 50 | 51-100 | FIGURE<br>NO            | ITEM<br>NO |
| PA0ZZ              | 5340-663-9941                     | BUMPER, RUBBER NO-REF-DESIG 3-4 DIA X 3-8 H...<br>CA<br>2194 (83330) AEC,AED   | EA                        | 4                               | *   | *    | *     | *      |                         |            |
| PA0ZZ              | 6145-112-8669                     | CABLE, POWER, ELECTRICAL W1 TWO #12 AWG.....<br>STRANDED COPPER COND 600 VDCWO.605 DIA OA UL<br>FLEXIBLE CORD & FIXTURE WIRE S-SC EXCEPT INS &<br>JACKET<br>71-4945 (80063) AEC    | FT                        | 16                              | *   | *    | *     | *      |                         | W1         |
| PA0ZZ              | 6145-188-5650                     | CABLE, POWER, ELECTRICAL W1 TWO #14 AWG.....<br>STRANDED COPPER COND 600 VDCWO.530 NOM DIA UL<br>TYPE S EXCEPT INS & JACKET<br>71-4945 (80063) AED                                 | FT                        | 15                              | *   | *    | *     | *      |                         | W1         |
| PA0ZZ              | 6145-112-8669                     | CABLE, POWER, ELECTRICAL NO-REF-DESIG 12 AWG..<br>STRANDED COPPER COND 600 VDCW 0.605 DIA OA UL<br>FLEXIBLE CORD FIXTURE WIRE S-SC EXCEPT INS AND<br>JACKET<br>71-4945 (80063) AEB | FT                        | 15                              | *   | *    | *     | *      |                         |            |
| PA0ZZ              | 5975-346-6273                     | CLAMP, ELECTRICAL H2 SECURES INPUT CABLE TO.<br>CASE STEEL 7-6 X 1-3-8 X 1-1-16 IN<br>C23 (78229) AED  | EA                        | 1                               | *   | *    | *     | *      |                         | H2         |
| PA0ZZ              | 5975-351-3640                     | CLAMP, ELECTRICAL H1 SECURE CABLE TO CASE ..<br>APPROX 7-8 1G X 1-1-4 WD X 15-16 DIA OA<br>574R (78229) AEC  | FA                        | 1                               | *   | *    | *     | *      |                         | H1         |
| PA0ZZ              | 5975-590-5671                     | CLAMP, ELECTRICAL NO-REF-DESIG FOR CABLE .....<br>BAKELITE APPROX 1.28 X 1.28 X 1.22 ACCOM MATL<br>11-16 MAX DIA<br>SR9 (28920) AEB  | EA                        | 1                               | *   | *    | *     | *      |                         | P1         |
| PA0ZZ              | 5935-161-9732                     | CONNECTOR, PLUG, ELECTRICAL P1 2 FLAT MALE..<br>CONT STRAIGHT 1.156 1G X 1.531 DIA EXCL<br>CONT<br>7184 (74545) AEB  | EA                        | 1                               | *   | *    | *     | *      |                         | P1         |
| PA0ZZ              | 5935-299-0275                     | CONNECTOR, RECEPTACLE, ELECTRICAL J1 2.....<br>CURVED TWIST FEMALE CONT STRAIGHT APPROX<br>1.125 H X 1.390 DIA LESS MTG STRAPS<br>9213 (74545) AEB                                 | EA                        | 2                               | *   | *    | *     | *      |                         | J1         |
| PA0ZZ              | 5935-199-0275                     | CONNECTOR, RECEPTACLE, ELECTRICAL J2 2.....<br>CURVED TWIST FEMALE CONT STRAIGHT APPROX<br>1.125 H X 1.390 DIA LESS MTG STRAPS<br>9213 (74545) AEB                                 | FA                        | REF                             | *   | *    | *     | *      |                         | J2         |
| PA0ZZ              | 5935-279-9337                     | CONNECTOR, RECEPTACLE, ELECTRICAL J1 4 FLAT..<br>DOUBLE T FEMALE CONT STRAIGHT 2.625 LG LESS<br>MTG X 1.328 WD X 1.125 THK<br>9575 (74545) AEB                                     | EA                        | 1                               | *   | *    | *     | *      |                         | J1         |
| PA0ZZ              | 5935-189-6844                     | CONNECTOR, RECEPTACLE, ELECTRICAL J1 2.....<br>FEMALE PARALLEL SLOT CONT STRAIGHT 1.187 1G X<br>2.031 DIA OA<br>9919 (74545) AED   | FA                        | 2                               | *   | *    | *     | *      |                         | J1         |
| PA0ZZ              | 5935-189-6844                     | CONNECTOR, RECEPTACLE, ELECTRICAL J2 2.....<br>FEMALE PARALLEL SLOT CONT STRAIGHT 1.187 1G X<br>2.031 DIA OA<br>9919 (74545) AED   | EA                        | REF                             | *   | *    | *     | *      |                         | J2         |
| PA0ZZ              | 5950-510-1614                     | DIAL, SCALE NO-REF-DESIG 180 TO 360 CW, 330...<br>DEG ARE 3-1-4 DIA ZINC<br>0148C1 (30724) AED   | EA                        | 1                               | *   | *    | *     | *      |                         |            |
| PA0ZZ              | 5920-548-5027                     | FUSE LINK, ELECTRICAL F1 FOR FERRULE FUSE...<br>CARTRIDGE 25 AMP, 250 V 1-11-16 1G X 3-16-ND 0-<br>A<br>1K425 (71400) AED  | EA                        | 2                               | *   | *    | *     | *      |                         | F1         |
| PA0ZZ              | 5920-548-5027                     | FUSE LINK, ELECTRICAL F2 FOR FERRULE FUSE...<br>CARTRIDGE 25 AMP, 250 V 1-11-16 1G X 3-16-ND 0-<br>A<br>1K425 (71400) AED  | EA                        | REF                             | *   | *    | *     | *      |                         | F2         |
| PA0ZZ              | 5929-057-0656                     | FUSE LINK, ELECTRICAL F3 FOR FERRULE FUSE...<br>CARTRIDGE 25 AMP, 250 V APPROX 2-7-324 1G X 1-<br>4-ND 0-A<br>WFB03 (06006) AEB  | EA                        | 2                               | *   | *    | *     | *      |                         | WF3        |
| PA0ZZ              | 5920-503-0736                     | FUSE LINK, ELECTRICAL F4 FOR FERRULE FUSE...<br>CARTRIDGE 25 AMP, 250 V APPROX 2-7-324 1G X 1-<br>4-ND 0-A<br>WFB03 (06006) AEB  | EA                        | 1                               | *   | *    | *     | *      |                         | WF4        |
| PA0ZZ              | 5920-503-0736                     | FUSE LINK, ELECTRICAL F5 FOR FERRULE FUSE...<br>CARTRIDGE 25 AMP, 250 V APPROX 2-7-324 1G X 1-<br>4-ND 0-A<br>WFB03 (06006) AEB  | EA                        | 1                               | *   | *    | *     | *      |                         | WF5        |
| PA0ZZ              | 5920-503-0736                     | FUSE LINK, ELECTRICAL F6 FOR FERRULE FUSE...<br>CARTRIDGE 25 AMP, 250 V APPROX 2-7-324 1G X 1-<br>4-ND 0-A<br>WFB03 (06006) AEB  | EA                        | 1                               | *   | *    | *     | *      |                         | WF6        |
| PA0ZZ              | 5920-503-0736                     | FUSE LINK, ELECTRICAL F7 FOR FERRULE FUSE...<br>CARTRIDGE 25 AMP, 250 V APPROX 2-7-324 1G X 1-<br>4-ND 0-A<br>WFB03 (06006) AEB  | EA                        | 1                               | *   | *    | *     | *      |                         | WF7        |
| PA0ZZ              | 5920-503-0736                     | FUSE LINK, ELECTRICAL F8 FOR FERRULE FUSE...<br>CARTRIDGE 25 AMP, 250 V APPROX 2-7-324 1G X 1-<br>4-ND 0-A<br>WFB03 (06006) AEB  | EA                        | 1                               | *   | *    | *     | *      |                         | WF8        |
| PA0ZZ              | 5920-503-0736                     | FUSE LINK, ELECTRICAL F9 FOR FERRULE FUSE...<br>CARTRIDGE 25 AMP, 250 V APPROX 2-7-324 1G X 1-<br>4-ND 0-A<br>WFB03 (06006) AEB  | EA                        | 1                               | *   | *    | *     | *      |                         | WF9        |

SECTION III

TM11-5950-210-24P

| (1)<br>SMR<br>CODE | (2)<br>FEDERAL<br>STOCK<br>NUMBER | (3)<br>DESCRIPTION<br>REFERENCE NUMBER & MFR CODE<br>USABLE ON CODE  |         | (4)<br>UNIT<br>OF<br>MEAS | (5)<br>QTY<br>INC<br>IN<br>UNIT | (6)<br>15-DAY ORGANIZATIONAL<br>MAINTENANCE ALW |      |       |        | (7)<br>ILLUSTRATION |            |
|--------------------|-----------------------------------|--|---------|---------------------------|---------------------------------|---|------|-------|--------|---------------------|------------|
|                    |                                   |  |         |                           |                                 | (a)   | (b)  | (c)   | (d)    | (a)                 | (b)        |
|                    |                                   |  |         |                           |                                 | 1-5   | 6-20 | 21-50 | 51-100 | FIGURE<br>NO        | ITEM<br>NO |
|                    |                                   | CONTINUED  |         |                           |                                 |   |      |       |        |                     |            |
| PAQZZ              | 5920-229-5276                     | RENEWABLE 2LG X 9-16-DI A 0-A<br>WF803A (96906)  | AEB,AEC | EA                        | REF                             | *   | *    | *     | *      |                     | F2         |
|                    |                                   | FUSE, CARTRIDGE F2 25 AMP, 250 V .....   |         |                           |                                 |   |      |       |        |                     |            |
| PAQZZ              | 5355-180-6869                     | RENEWABLE 2LG X 9-16-DI A 0-A<br>WF803A (96906)  | AEB,AEC | FA                        | 1                               | *   | *    | *     | *      |                     | H2         |
|                    |                                   | KNOB H2 FOR 1-4 DIA SHAFT WHITE LINE.....  |         |                           |                                 |   |      |       |        |                     |            |
| PAQZZ              | 5355-160-5881                     | MARKING 1-1-2 DIA X 13-16 THK OA<br>S380642522L (75376)  | AEC     | EA                        | 1                               | *   | *    | *     | *      |                     | H1         |
|                    |                                   | KNOB H1 FOR 1-4 DIA SHAFT INCL POINTER 1-..  |         |                           |                                 |   |      |       |        |                     |            |
| PAQZZ              | 5930-407-1400                     | 3/4 1G FROM CTR 1-5-8 DIA X 3-4 THK OA<br>S309-64-40269 (75376)  | AEB,AED | EA                        | 1                               | *   | *    | *     | *      |                     | S2         |
|                    |                                   | SWITCH, ROTARY TAP S2 SP 12 POSITION 300 V   |         |                           |                                 |   |      |       |        |                     |            |
| PAQZZ              | 5930-548-3377                     | AC, 25 AMP 3-5-16 DIA<br>312 (44655)   | AED     | EA                        | 1                               | *   | *    | *     | *      |                     |            |
|                    |                                   | SWITCH, ROTARY NO-REF-DESIG 1 POLF, 12 THROWS,<br>150V, 15 AMPS  |         |                           |                                 |   |      |       |        |                     |            |
| PAQZZ              | 5930-188-1003                     | 212-12 (44655)   | AEB,AEC | EA                        | 1                               | *   | *    | *     | *      |                     | S1         |
|                    |                                   | SWITCH, TOGGLE S1 DPST LOCKING ACTION 1-..   |         |                           |                                 |   |      |       |        |                     |            |
| PAQZZ              | 5950-510-1674                     | 21-64 X49-64 X1-1-16 0/A<br>ST52K (81349)  |         | EA                        | 1                               | *   | *    | *     | *      |                     | T1         |
|                    |                                   | TRANSFORMER, POWER, FIXED AUTOTRANSFORMER T1.  |         |                           |                                 |   |      |       |        |                     |            |
| PAQZZ              | 5950-698-5205                     | 130/260 V AC, 50-60 CYC, SINGLE PH INPUT OUTPUT<br>115 V AC, 17.4 AMP, 2 KVA HS 7-1-4 X 7-3-8 X<br>6-7-8 IN EXCT TERM 0 MTG<br>AM10109 (98035) | AEC     | EA                        | 1                               | *   | *    | *     | *      |                     | T1         |
|                    |                                   | TRANSFORMER, POWER, FIXED AUTOTRANSFORMER T1.  |         |                           |                                 |   |      |       |        |                     |            |
| PAQHD              | 6625-889-1797                     | 130-260 V AC IN 12 STEPS, 50-60 CYC, SINGLE PH<br>INPUT OUTPUT 115 V AC, 17.4 AMP, 2 KVA 11-5-8<br>X 7-1-8 X 7-5-8 HS<br>SP6148A (30724)       | AED     | EA                        | 1                               | *   | *    | *     | *      |                     |            |
|                    |                                   | VOLTMETER NO-REF-DESIG AC, 50/60 CYC, SINGLE..   |         |                           |                                 |   |      |       |        |                     |            |
| PAQHD              | 6625-889-1797                     | PH 0-150 V EW FT 2-11-16 DIA, BODY 2-1-16 DIA<br>X 1-21-32 D FMS<br>MILM10304PYPEMR2*  | AEB     | EA                        | REF                             | *   | *    | *     | *      |                     |            |
|                    |                                   | VOLTMETER NO-REF-DESIG AC, 50/60 CYC, SINGLE..   |         |                           |                                 |   |      |       |        |                     |            |
| PAQZZ              | 6625-542-1558                     | PH 0-150 V E- FT 2-11-16 DIA, BODY 2-1-16 DIA<br>X 1-21-32 D FMS<br>MILM10304PYPEMR2*<br>6W150ACRVR (81349)                                    | AEB     | EA                        | 1                               | *   | *    | *     | *      |                     | V1         |
|                    |                                   | VOLTMETER.....   |         |                           |                                 |   |      |       |        |                     |            |
|                    |                                   | MR26W150ACVV (81349)   | AEC,AED |                           |                                 |   |      |       |        |                     |            |

SECTION V

TM11-5950-210-24P

| (1)<br>SMR<br>CODE | (2)<br>FEDERAL<br>STOCK<br>NUMBER | (3)<br>DESCRIPTION<br>REFERENCE NUMBER & MFR CODE USABLE ON CODE   | (4)<br>UNIT<br>OF<br>MEAS | (5)<br>QTY<br>INC<br>IN<br>UNIT | (6)<br>30 DAY DS MAINT<br>ALLOWANCE |       |        | (7)<br>30 DAY GS MAINT<br>ALLOWANCE |       |        | (8)<br>1-YR<br>ALW PER<br>100<br>EQUIP<br>CNTGCT | (9)<br>DEPOT<br>MAINT<br>ALW PER<br>100<br>EQUIP | (10)<br>ILLUSTRATION |            |
|--------------------|-----------------------------------|--|---------------------------|---------------------------------|-------------------------------------|-------|--------|-------------------------------------|-------|--------|--|--|----------------------|------------|
|                    |                                   |  |                           |                                 | (a)                                 | (b)   | (c)    | (a)                                 | (b)   | (c)    |  |  | (a)                  | (b)        |
|                    |                                   |  |                           |                                 | 1-20                                | 21-50 | 51-100 | 1-20                                | 21-50 | 51-100 |  |  | FIGURE<br>NO         | ITEM<br>NO |
| PAOZZ              | 5340-663-9941                     | BUMPER, RUBBER NO-REF-DESIG 3-4 DIA X 3-8 H OA<br>2194 (833301) AEC, AED   | EA                        | 4                               | *                                   | *     | *      | *                                   | *     | *      |  | 10   |                      |            |
| PAOZZ              | 6145-112-8669                     | CABLE, POWER, ELECTRICAL W1 TWO #12...<br>AWG STRANDED COPPER COND 600 VDCWO.605<br>DIA OA UL FLEXIBLE CORD & FIXTURE WIRE S-<br>SC EXCEPT INS & JACKET<br>71-4945 (80063) AEC   | FT                        | 16                              | *                                   | *     | *      | *                                   | *     | *      |  | 5  |                      | W1         |
| PAOZZ              | 6145-188-5650                     | CABLE, POWER, ELECTRICAL W1 TWO #14...<br>AWG STRANDED COPPER COND 600 VDCWO.530<br>NOM DIA UL TYPE S EXCEPT INS & JACKET<br>71-4945 (80063) AED                                 | FT                        | 15                              | *                                   | *     | *      | *                                   | *     | *      |  | 5  |                      | W1         |
| PAOZZ              | 6145-112-8669                     | CABLE, POWER, ELECTRICAL NO-REF-DESIG 12<br>AWG STRANDED COPPER COND 600 VDCW 0.605<br>DIA OA UL FLEXIBLE CORD FIXTURE WIRE S-SC<br>EXCEPT INS AND JACKET<br>71-4945 (80063) AEB | FT                        | 15                              | *                                   | *     | *      | *                                   | *     | *      |  | 5  |                      |            |
| PAOZZ              | 5975-346-6273                     | CLAMP, ELECTRICAL M2 SECURES INPUT....<br>CABLE TO CASE STEEL 7-6 X 1-3-8 X 1-1-16<br>IN<br>C23 (78229) AED  | EA                        | 1                               | *                                   | *     | *      | *                                   | *     | *      |  | 3  |                      | H2         |
| PAOZZ              | 5975-351-3640                     | CLAMP, ELECTRICAL M1 SECURE CABLE TC..<br>CASE APPROX 7-8 1G X 1-1-4 WD X 15-16<br>DIA OA<br>574R (78229) AEC  | EA                        | 1                               | *                                   | *     | *      | *                                   | *     | *      |  | 3  |                      | W1         |
| PAOZZ              | 5975-590-5671                     | CLAMP, ELECTRICAL NO-REF-DESIG FOR.....<br>CABLE BAKELITE APPROX 1.28 X 1.28 X 1.22<br>ACCOM MATL 11-16 MAX DIA<br>SR9 (28520) AEB   | EA                        | 1                               | *                                   | *     | *      | *                                   | *     | *      |  | 3  |                      | P1         |
| PAOZZ              | 5935-161-9732                     | CONNECTOR, PLUG, ELECTRICAL P1 2 FLAT,<br>MALE CONT STRAIGHT 1.156 1G X 1.531<br>DIA EXCL CONT<br>7184 (74545) AEB   | EA                        | 1                               | *                                   | *     | *      | *                                   | *     | *      |  | 3  |                      | P1         |
| PAOZZ              | 5935-199-0275                     | CONNECTOR, RECEPTACLE, ELECTRICAL J1 2<br>CURVED THIST FEMALE CONT STRAIGHT APPROX<br>1.125 H X 1.390 DIA LESS MTG STRAPS<br>9213 (74545) AEB                                    | FA                        | 2                               | *                                   | *     | *      | *                                   | *     | *      |  | 3  |                      | J1         |
| PAOZZ              | 5935-199-0275                     | CONNECTOR, RECEPTACLE, ELECTRICAL J2 2<br>CURVED THIST FEMALE CONT STRAIGHT APPROX<br>1.125 H X 1.390 DIA LESS MTG STRAPS<br>9213 (74545) AEB                                    | EA                        | REF                             | *                                   | *     | *      | *                                   | *     | *      |  | 3  |                      | J2         |
| PAOZZ              | 5935-279-9337                     | CONNECTOR, RECEPTACLE, ELECTRICAL J1 4<br>FLAT DOUBLE T FEMALE CONT STRAIGHT<br>2.625 1G LF55 4TG X 1.328 WD X 1.125<br>THK<br>9575 (74545) AEC                                  | EA                        | 1                               | *                                   | *     | *      | *                                   | *     | *      |  | 3  |                      | J1         |
| PAOZZ              | 5935-189-6844                     | CONNECTOR, RECEPTACLE, ELECTRICAL J1 2<br>FEMALE PARALLEL SLOT CONT STRAIGHT<br>1.187 1G X 2.031 DIA OA<br>9819 (74545) AEB  | EA                        | 2                               | *                                   | *     | *      | *                                   | *     | *      |  | 3  |                      | J1         |
| PAOZZ              | 5935-189-6844                     | CONNECTOR, RECEPTACLE, ELECTRICAL J2 2<br>FEMALE PARALLEL SLOT CONT STRAIGHT<br>CONTINUED  | EA                        | REF                             | *                                   | *     | *      | *                                   | *     | *      |  | 3  |                      | J2         |



SECTION V

TM11-5950-210-24P

| SAR CODE | FEDERAL STOCK NUMBER | DESCRIPTION<br>REFERENCE NUMBER & MFR CODE    USABLE ON CODE  | UNIT OF MEAS | QTY INC IN UNIT | 30-DAY DS MAINT ALLOWANCE |       |        | 30-DAY GS MAINT ALLOWANCE |       |        | 1-YR ALW PER 100 EQUIP CNTGCTY | DEPOT MAINT ALW PER 100 EQUIP | ILLUSTRATION |         |
|----------|----------------------|---|--------------|-----------------|---------------------------|-------|--------|---------------------------|-------|--------|--------------------------------|-------------------------------|--------------|---------|
|          |                      |   |              |                 | (a)                       | (b)   | (c)    | (a)                       | (b)   | (c)    |                                |                               | (a)          | (b)     |
|          |                      |   |              |                 | 1-20                      | 21-50 | 51-100 | 1-20                      | 21-50 | 51-100 |                                |                               | FIGURE NO    | ITEM NO |
|          |                      | CONTINUED   |              |                 |                           |       |        |                           |       |        |                                |                               |              |         |
| PAQZZ    | 5950-510-1614        | 9213 (74545) AEB<br>8819 (74545) AFD<br>DIAL, SCALE NO-REF-DESIG 130 TO 260 CW..  | EA           | 1               | *                         | *     | *      | *                         | *     | *      |                                | 2                             |              |         |
| PAQZZ    | 5920-548-5027        | 330 DEG ARE 3-1-4 DIA ZINC<br>8148C1 (30724) AFD<br>FUSE LINK, ELECTRICAL F1 FOR FERRULE..  | EA           | 2               | *                         | *     | *      | *                         | *     | *      |                                | 50                            |              | E1      |
| PAQZZ    | 5923-548-5027        | FUSE CARTRIDGE 25 AMP, 250 V 1-11-16 LG X 3-16+WD 0-A<br>LKA25 (71400) AED<br>FUSE LINK, ELECTRICAL E2 FOR FERRULE..              | EA           | REF             | *                         | *     | *      | *                         | *     | *      |                                | 50                            |              | F2      |
| PAQZZ    | 5920-057-0656        | FUSE CARTRIDGE 25 AMP, 250 V APPROX 2-7-32+ LG X 1-4+ WD 0-A<br>LKA25 (71400) AED<br>FUSE LINK, ELECTRICAL XF1 FOR FERRULE..      | EA           | 2               | *                         | *     | *      | *                         | *     | *      |                                | 50                            |              | XF1     |
| PAQZZ    | 5920-503-0736        | FUSE CARTRIDGE 25 AMP, 250 V APPROX 2-7-32+ LG X 1-4+ WD 0-A<br>WF803 (96906) AEB, AEC<br>FUSEHOLDER XF1 EXTRACTOR POST TYPE .... | EA           | 1               | *                         | *     | *      | *                         | *     | *      |                                | 3                             |              | XF1     |
| PAQZZ    | 5920-240-4100        | ACCOM 2 CARTRIDGE FUSES 1-5-8 X 1-3-8 X 15-16 IN 0-A<br>4424 (71400) AED<br>FUSEHOLDER T81 BLACK TYPE ACCOM 2.....                | EA           | 1               | *                         | *     | *      | *                         | *     | *      |                                | 3                             |              | T81     |
| PAQZZ    | 5920-548-5026        | CARTRIDGE FUSES 3-5/16 X 2-13-16 X 1-3-8 0A<br>1917 (74545) ACC<br>FUSE, CARTRIDGE F1 25 AMP, 250V .....                          | EA           | 2               | *                         | *     | *      | *                         | *     | *      |                                | 50                            |              | F1      |
| PAQZZ    | 5920-548-5026        | RENEWABLE 1-1-2 16 X 13-32DIA 0A<br>RKA25 (71400) AED<br>FUSE, CARTRIDGE F2 25 AMP, 250V .....                                    | EA           | REF             | *                         | *     | *      | *                         | *     | *      |                                | 50                            |              | F2      |
| PAQZZ    | 5920-229-5276        | RENEWABLE 1-1-2 16 X 13-32DIA 0A<br>RKA25 (71400) AED<br>FUSE, CARTRIDGE F1 25 AMP, 250 V ....                                    | EA           | 2               | *                         | *     | *      | *                         | *     | *      |                                | 50                            |              | F1      |
| PAQZZ    | 5920-229-5276        | RENEWABLE 2LG X 9-16-DI A 0-A<br>WF803A (96906) AEB, AFC<br>FUSE, CARTRIDGE F2 25 AMP, 250 V ....                                 | EA           | REF             | *                         | *     | *      | *                         | *     | *      |                                | 50                            |              | F2      |
| PAQZZ    | 5355-160-6869        | RENEWABLE 2LG X 9-16-DI A 0-A<br>WF803A (96906) AEB, AEC<br>KNOB H2 FOR 1-4 DIA SHAFT WHITE LINE                                  | EA           | 1               | *                         | *     | *      | *                         | *     | *      |                                | 3                             |              | H2      |
| PAQZZ    | 5355-160-5881        | MARKING 1-1-2 DIA X 13-16 THK 0A<br>S380648522L (75376) AEC<br>KNOB H1 FOR 1-4 DIA SHAFT INCL.....                                | EA           | 1               | *                         | *     | *      | *                         | *     | *      |                                | 3                             |              | H1      |
| PAQZZ    | 5930-407-1400        | POINTER 1-3/4 16 FROM CTR 1-5-8 DIA X 3-4 THK 0A<br>S309-64-40269 (75376) AEB, AED<br>SWITCH, ROTARY TAP S2 SP 12 POSITION        | EA           | 1               | *                         | *     | *      | *                         | *     | *      |                                | 5                             |              | S2      |
| PAQZZ    | 5930-548-3377        | 300 V AC, 25 AMP 3-5-16 DIA<br>312 (44655) AED<br>SWITCH, ROTARY NO-REF-DESIG 1 POLE, 12..  | EA           | 1               | *                         | *     | *      | *                         | *     | *      |                                | 5                             |              |         |
| PAQZZ    | 5930-188-1003        | THROWS, 150V, 15 AMP<br>212-12 (44655) AEB, AEC<br>SWITCH, TOGGLE S1 DPST LOCKING.....  | EA           | 1               | *                         | *     | *      | *                         | *     | *      |                                | 5                             |              | S1      |
|          |                      | CONTINUED   |              |                 |                           |       |        |                           |       |        |                                |                               |              |         |

SECTION V

TM11-5950-210-24P

| (1)<br>SMR<br>CODE | (2)<br>FEDERAL<br>STOCK<br>NUMBER | (3)<br>DESCRIPTION<br>REFERENCE NUMBER & MFR CODE USABLE ON CODE  |  | (4)<br>UNIT<br>OF<br>MEAS | (5)<br>QTY<br>INC<br>IN<br>UNIT | (6)<br>30 DAY DS MAINT<br>ALLOWANCE |       |        | (7)<br>30 DAY GS MAINT<br>ALLOWANCE |       |        | (8)<br>1-YR<br>ALW PER<br>100<br>EQUIP<br>CNTGCT | (9)<br>DEPOT<br>MAINT<br>ALW PER<br>100<br>EQUIP | (10)<br>ILLUSTRATION |            |
|--------------------|-----------------------------------|---|--|---------------------------|---------------------------------|-------------------------------------|-------|--------|-------------------------------------|-------|--------|--|--|----------------------|------------|
|                    |                                   |   |  |                           |                                 | (a)                                 | (b)   | (c)    | (a)                                 | (b)   | (c)    |  |  | (a)                  | (b)        |
|                    |                                   |   |  |                           |                                 | ' 20                                | 21 50 | 51-100 | 1 20                                | 21-50 | 51 100 |  |  | FIGURE<br>NO         | ITEM<br>NO |
| PAOZZ              | 5950-510-1674                     | CONTINUED<br>RENEWABLE 2LG X 9-16-DI A 0-A<br>ST52K (81349)<br>TRANSFORMER, POWER, FIXED AUTOTRANSFORMER.<br>T1 130/260 V AC, 0-60 CYC, SINGLE PH<br>INPUT OUTPUT 115 V AC, 17.4 AMP, 2 KVA<br>HS 7-1-4 X 7-3-8 X 6-7-8 IN EXCT TERM O<br>MTG |  | EA                        | 1                               | *                                   | *     | *      | *                                   | *     | *      |  | 3  |                      | T1         |
| PAOZZ              | 5950-698-5205                     | AM10109 (98035) AEC<br>TRANSFORMER, POWER, FIXED AUTOTRANSFORMER.<br>T1 130-260 V AC IN 12 STEPS, 50-60 CYC,<br>SINGLE PH INPUT OUTPUT 115 V AC, 17.4<br>AMP, 2 KVA 11-5-8 X 7-1-8 X 7-5-8 HS<br>SP6148A (30724) AED                          |  | EA                        | 1                               | *                                   | *     | *      | *                                   | *     | *      |  | 3  |                      | T1         |
| PAOHD              | 6625-889-1797                     | VOLTMETER NO-REF-DESIG AC, 50/60 CYC....<br>SINGLE PH 0-150 V EM FT 2-11-16 DIA,<br>BODY 2-1-16 DIA X 1-21-32 D FMS<br>MILM10304PYPEMR2# AEB  |  | EA                        | 1                               | *                                   | *     | *      | *                                   | *     | *      |  | 3  |                      |            |
| PAOHD              | 6625-889-1791                     | 6W15DAC8VR (81349)<br>VOLTMETER NO-REF-DFSIG AC, 50/60 CYC....<br>SINGLE PH 0-150 V EM FT 2-11-16 DIA,<br>BODY 2-1-16 DIA X 1-21-32 D FMS<br>MILM10304PYPEMR2# AEB  |  | EA                        | REF                             | *                                   | *     | *      | *                                   | *     | *      |  | 3  |                      |            |
| PAOZZ              | 6625-542-1558                     | 6W15DACEVR (81349)<br>VOLTMETER.....<br>MR26W1 JACVV (81349) AEC, AED   |  | EA                        | 1                               | *                                   | *     | *      | *                                   | *     | *      |  | 3  |                      | V1         |

SECTION VII

TM11-5950-210-24P

INDEX - FEDERAL STOCK NUMBER AND REFERENCE NUMBER  
CROSS-REFERENCE TO FIGURE AND ITEM NUMBER

| STOCK NUMBER  | FIGURE NO. | ITEM NO. | STOCK NUMBER  | FIGURE NO. | ITEM NO. |
|---------------|------------|----------|---------------|------------|----------|
| 5340-663-9941 |            |          | 5935-189-6844 |            | J1       |
| 5355-160-5881 |            |          | 5935-189-6844 |            | J2       |
| 5355-160-6869 |            | H1       | 5935-199-0275 |            | J1       |
| 5920-057-0656 |            | H2       | 5935-199-0275 |            | J2       |
| 5920-229-5276 |            | XF1      | 5935-279-9337 |            | J1       |
| 5920-229-5276 |            | F1       | 5950-510-1614 |            |          |
| 5920-240-4100 |            | F2       | 5950-510-1674 |            | T1       |
| 5920-503-0736 |            | T81      | 5950-698-5205 |            | T1       |
| 5920-548-5026 |            | XF1      | 5975-346-6273 |            | H2       |
| 5920-548-5026 |            | F1       | 5975-351-3640 |            | H1       |
| 5920-548-5026 |            | F2       | 5975-590-5671 |            |          |
| 5920-548-5027 |            | E1       | 6145-112-8669 |            | W1       |
| 5930-188-1003 |            | E2       | 6145-112-8669 |            | W1       |
| 5930-407-1400 |            | S1       | 6145-188-5650 |            | W1       |
| 5930-548-3377 |            | S2       | 6625-542-1558 |            | V1       |
| 5935-161-9732 |            | P1       | 6625-889-1797 |            |          |

| REFERENCE NO.              | MFR CODE | FIG. NO. | ITEM NO. | REFERENCE NO. | MFR CODE | FIG. NO. | ITEM NO. |
|----------------------------|----------|----------|----------|---------------|----------|----------|----------|
| AM10109                    | 98035    |          | T1       | 1917          | 74545    |          | T81      |
| C23                        | 78229    |          | H2       | 212-12        | 44655    |          |          |
| LKA25                      | 71400    |          | E1       | 2194          | 83330    |          |          |
| LKA25                      | 71400    |          | F2       | 312           | 44655    |          | S2       |
| MILM10304PYPEMR26W15DACBVR | 81349    |          |          | 4424          | 71400    |          | XF1      |
| MR26W150ACVV               | 81349    |          | V1       | 574R          | 78229    |          | H1       |
| RKA25                      | 71400    |          | F1       | 6148C1        | 30724    |          |          |
| RKA25                      | 71400    |          | F2       | 71-4945       | 80063    |          |          |
| SP6148A                    | 30724    |          | T1       | 71-4945       | 80063    |          | W1       |
| SR9                        | 28520    |          |          | 7184          | 74545    |          | P1       |
| ST52K                      | 81349    |          | S1       | 9213          | 74545    |          | J1       |
| S309-64-40269              | 75376    |          | H1       | 9213          | 74545    |          | J2       |
| S38064B522L                | 75376    |          | H2       | 9575          | 74545    |          | J1       |
| WF803                      | 96906    |          | XF1      | 9819          | 74545    |          | J1       |
| WF803A                     | 96906    |          | F1       | 9819          | 74545    |          | J2       |
| WF803A                     | 96906    |          | F2       |               |          |          |          |

By Order of the Secretary of the Army:

CREIGHTON W. ABRAMS  
*General, United States Army*  
*Chief of Staff*

Official:

VERNE L. BOWERS  
*Major General, United States Army*  
*The Adjutant General*

Distribution:

**Active Army:**

USASA (2)  
CNGB (1)  
ACSC-E (2)  
USAARENBD (2)  
USAMB (10)  
AMC (1)  
CONARC (5)  
ARADCOM (2)  
ARADCOM Rgn (2)  
OS Maj Comd (4)  
LOGCOMDS (5)  
MICOM (2)  
TECOM (2)  
USASTRATCOM (4)  
HISA (ECOM) (18)  
MDW (1)  
Armies (2)  
corps (2)  
Corps (2)  
Svc Colleges (2)  
USASESS (5)  
USAADS (2)  
USAFAS (2)  
USAARMS (2)  
USAIS (2)  
USAES (2)  
USAINTS (3)  
USACDCEC (5)

Instl (2) except  
Fort Gordon (10)  
Fort Hauchuca (10)  
Fort Carson (10)  
WSMR (2)  
Army Dep (2) Except  
LBAD (14)  
SAAD (30)  
TOAD (14)  
LEAD (7)  
ATAD (10)  
USA Dep (2)  
Sig Sec USA Dep (2)  
Sig Dep (5)  
Sig FLDMS (1)  
USAERDAA (1)  
USAERDAW (1)  
USAERDAW (1)  
MAAG (1)  
USARMIS(1)  
Ft Richardson (ECOM Ofc) (2)  
WRAMC (1)  
Unite org under fol TOE

**(1 copy each):**

**11-158**

**29-134**

**29-136**

NG: None

USAR: None.

**For explanation of abbreviations used, see AR 310-50.**

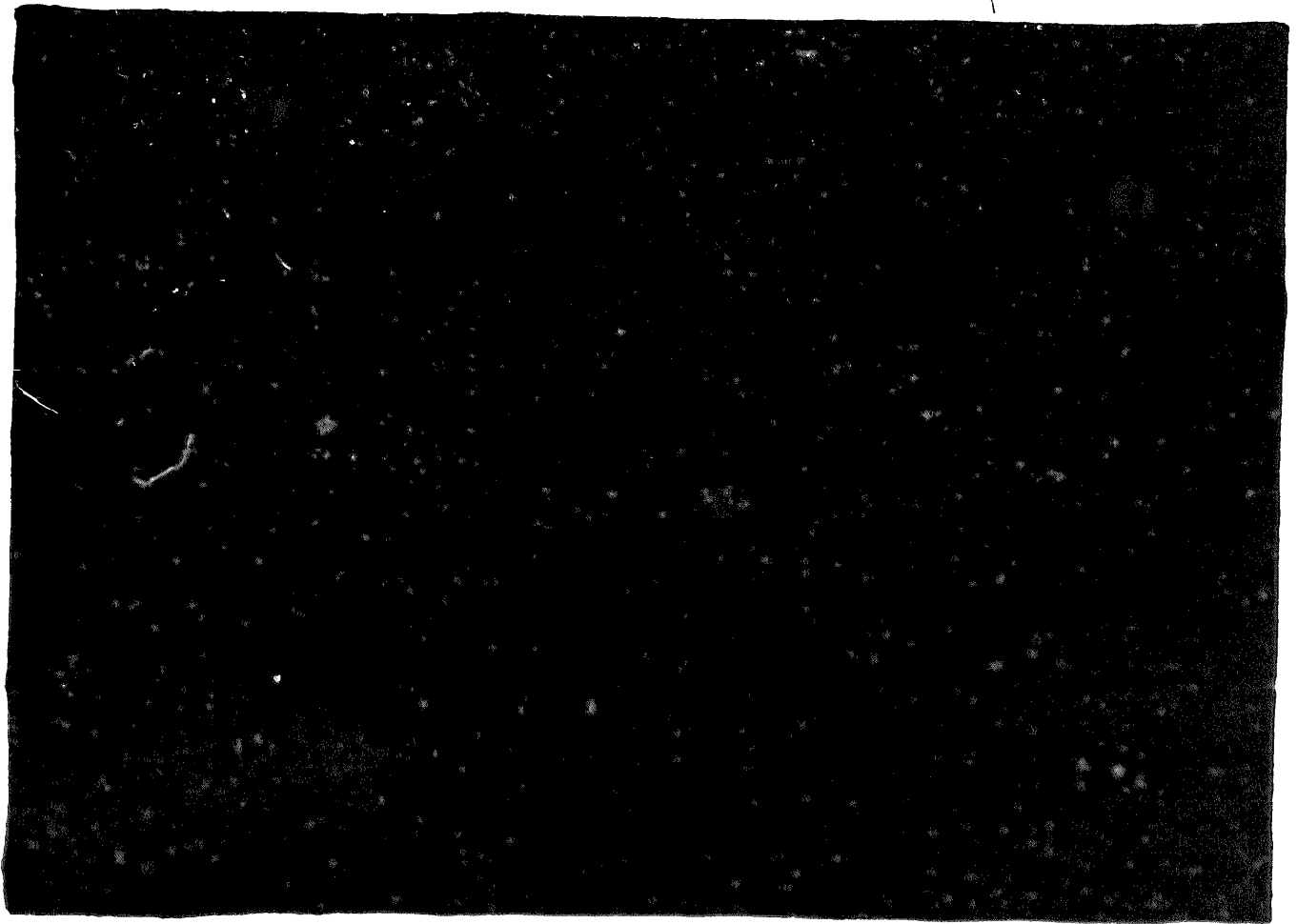
★ U.S. GOVERNMENT PRINTING OFFICE: 1973-769620/1064

**END**

**12-08-82**

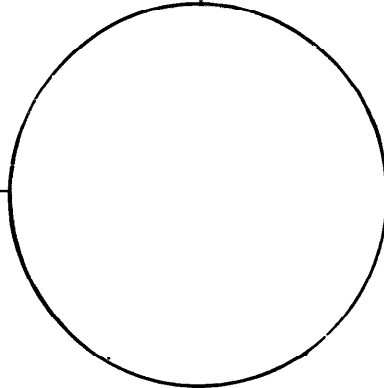
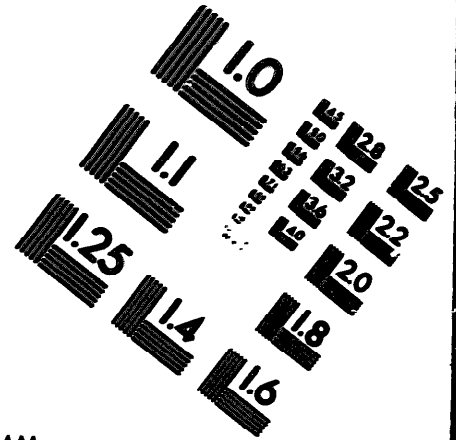
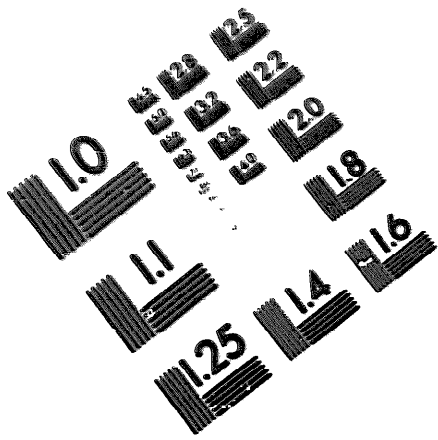
**DATE**





DEPARTMENT OF THE ARMY

MICROFORM  
TEST TARGET



150 MM

10 mm (ø = 81 mm)

ABCDEFGHIJKLMN OPQRSTU VWXYZ1234567890  
abcdefghijklmnopqrstu vxyz\$%&/'%# 1/2 1/4 3/4 —=+ x&@\*

15 mm (ø = 109 mm)

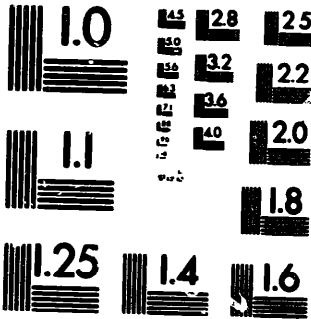
ABCDEFGHIJKLMN OPQRSTU VWXYZ1234567890  
abcdefghijklmnopqrstu vxyz\$%&/'%# 1/2 1/4 3/4 —=+ x&@\*

2.0 mm (ø = 1.37 mm)

ABCDEFGHIJKLMN OPQRSTU VWXYZ  
abcdefghijklmnopqrstu vxyz  
1234567890\$%&/'%# 1/2 1/4 3/4 —=+ x&@\*

2.5 mm (ø = 1.77 mm)

ABCDEFGHIJKLMN OPQRSTU VWXYZ  
abcdefghijklmnopqrstu vxyz  
1234567890\$%&/'%# 1/2 1/4 3/4 —=+ x&@\*



10 mm (ø = 81 mm)

ABCDEFGHIJKLMN OPQRSTU VWXYZ1234567890  
abcdefghijklmnopqrstu vxyz\$%&/'%# 1/2 1/4 3/4 —=+ x&@\*

15 mm (ø = 109 mm)

ABCDEFGHIJKLMN OPQRSTU VWXYZ1234567890  
abcdefghijklmnopqrstu vxyz\$%&/'%# 1/2 1/4 3/4 —=+ x&@\*

2.0 mm (ø = 1.37 mm)

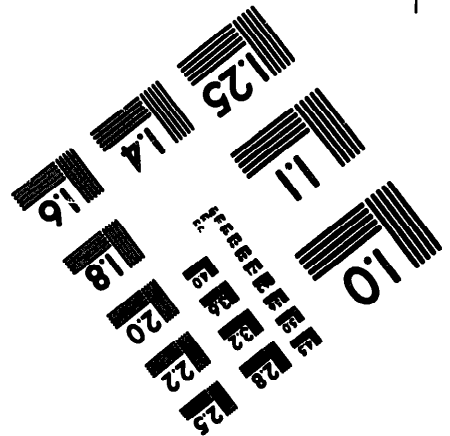
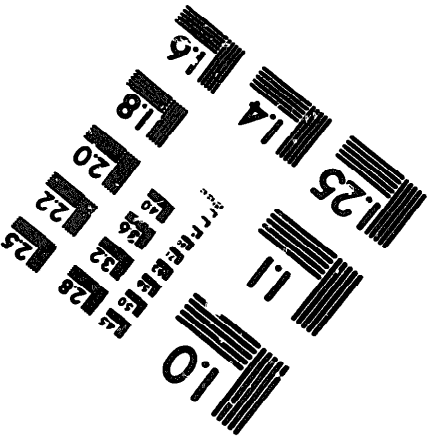
ABCDEFGHIJKLMN OPQRSTU VWXYZ  
abcdefghijklmnopqrstu vxyz  
1234567890\$%&/'%# 1/2 1/4 3/4 —=+ x&@\*

2.5 mm (ø = 1.77 mm)

ABCDEFGHIJKLMN OPQRSTU VWXYZ  
abcdefghijklmnopqrstu vxyz  
1234567890\$%&/'%# 1/2 1/4 3/4 —=+ x&@\*



200 MM



250 MM